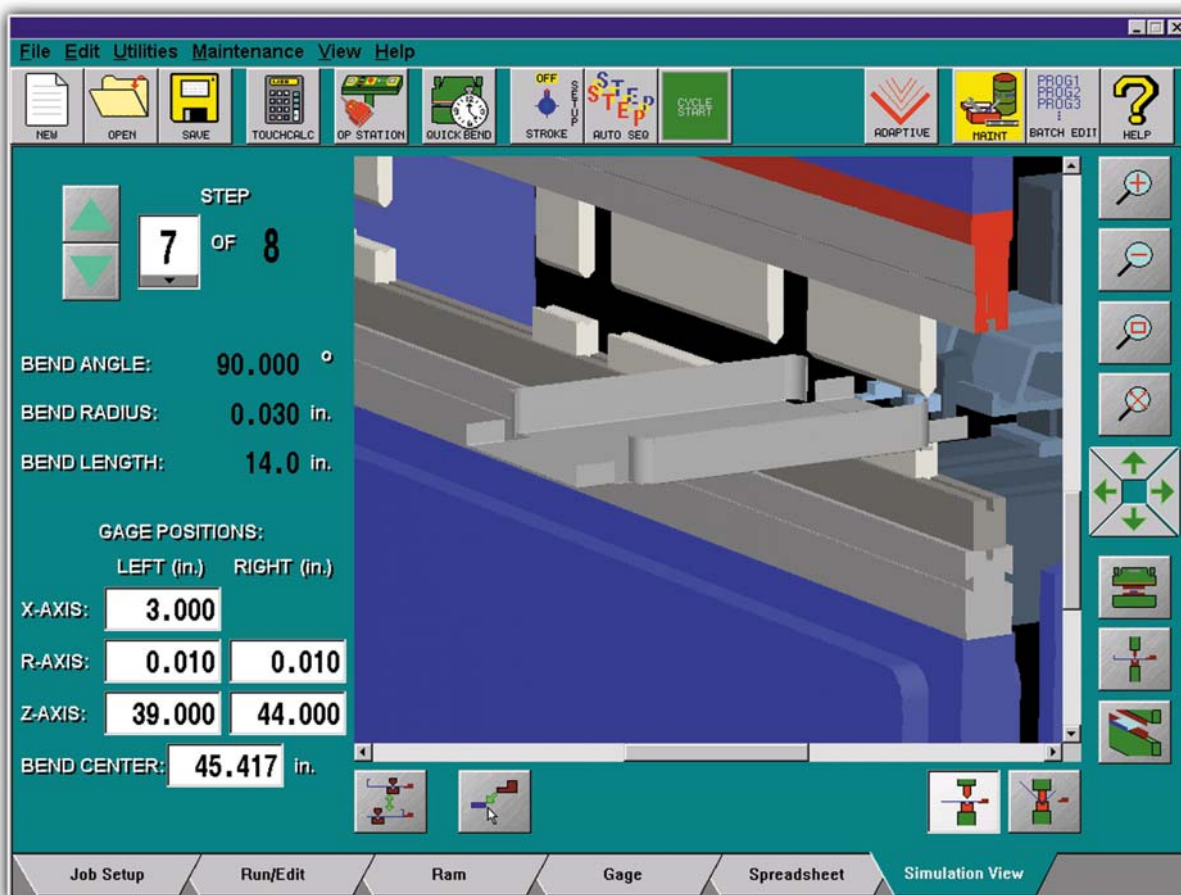


CINCINNATI

AUTOFORM® Touchscreen PC Control Upgrade

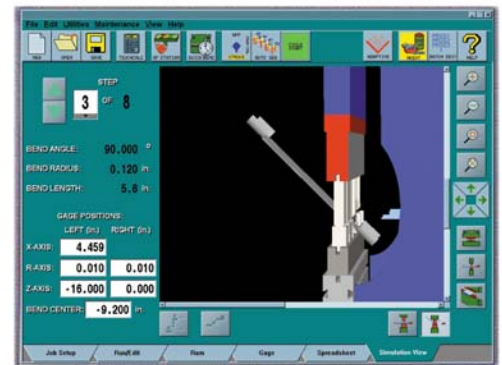
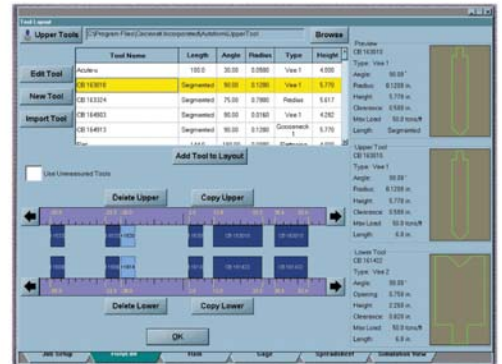
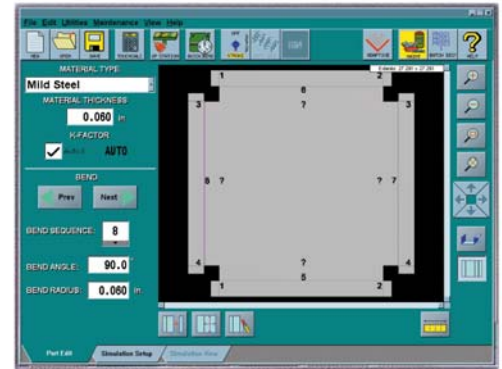
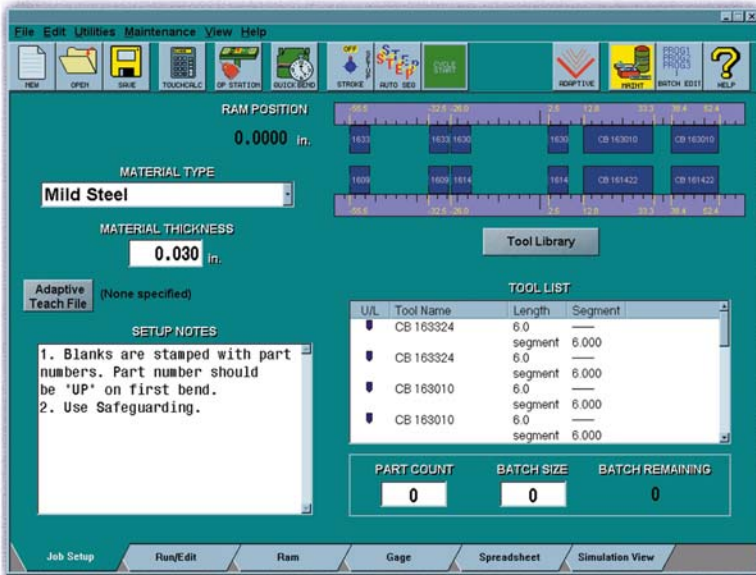


CINCINNATI utilizes the leading-edge control technology of a touchscreen, PC-based control. This control can be installed on your existing AUTOFORM® Press Brake using the same pendant arm and enclosure at an affordable cost. The new Touchscreen PC Control provides the following important productivity improvements:

- Fast data entry via touchscreen operator interface
- High-capacity file storage (Ethernet, Hard Drive, USB convenience outlet)
- Graphical Tool Library (American and European)
- JOB SETUP page displaying tool names, segment lengths, tool locations and setup notes
- Automatic Gage Allowance calculation
- Bend simulation capability including: Part drawing capability, CAD file import, 3-D forming simulations, checks for part interference, and automatic flat blank calculation
- Optional offline Bend Simulation Software also available

The addition of this new PC Control to your AUTOFORM® is a cost-effective way of improving productivity in your forming operations resulting in lower cost per part. The control upgrade includes the following:

- Installation of the new Touchscreen PC Control using the existing pendant arm and enclosure by Cincinnati Incorporated Service Representatives
- A limited Planned Maintenance Service inspection on the AUTOFORM® Press Brake
- Conversion of current part programs
- Control demonstration
- One-year parts and labor warranty



The Touchscreen PC Control delivers fast and repeatable setups through advanced control technology. Repeat jobs are recalled from a large-capacity hard drive, USB convenience outlet or network. Each program contains the visual-oriented JOB SETUP page that displays tool names, segment lengths, and tool locations. Detailed setup notes are stored to ensure important instructions are displayed each time the job is recalled.

A large color LCD screen is easy to see and use. To input data, simply touch the screen where indicated.

New programs are created through manual data entry, importing CAD files, or drawing the part in a cross section or flat view. After selecting the tools from the graphical tool library and accepting the bend simulation, a part program with optimized ram settings and backgauge positions is automatically created.

To request a quotation or to place an order, please call our Parts Department at 513-367-7413 or e-mail us at parts@e-ci.com.

CINCINNATI[®]
CINCINNATI INCORPORATED

Box 11111, Cincinnati, OH 45211
Phone: (513) 367-7100
FAX: (513) 367-7552
E-Mail: info@e-ci.com
Website: www.e-ci.com