

CINCINNATI

FM II Touchscreen PC Control Upgrade

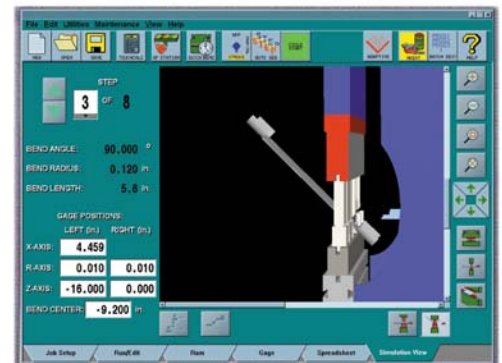
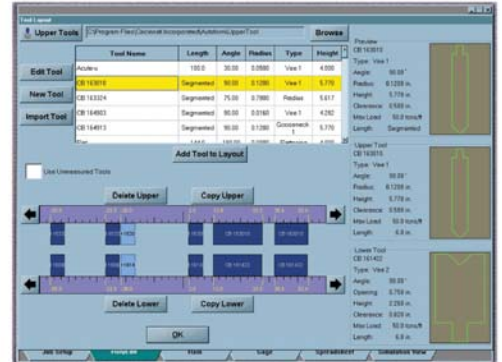
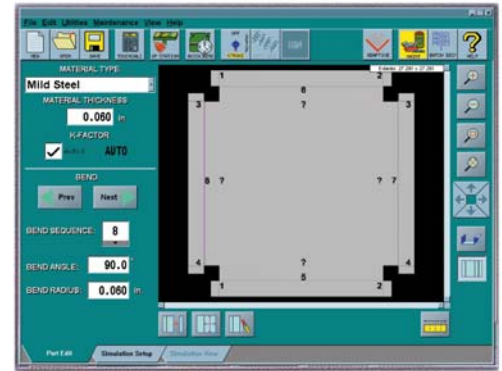
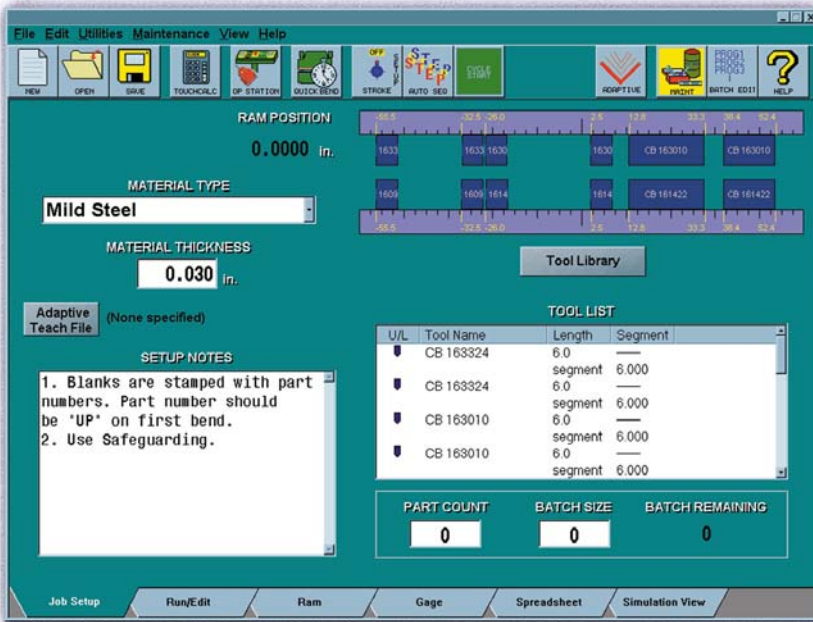


CINCINNATI utilizes the leading-edge control technology of a touchscreen, PC-based control. This control can be installed on your existing FMII Press Brake using the same pendant arm and enclosure at an affordable cost. The new Touchscreen PC Control provides the following important productivity improvements:

- Fast data entry via touchscreen operator interface
- High-capacity file storage (Ethernet, Hard Drive, USB convenience outlet)
- Graphical Tool Library (American and European)
- JOB SETUP page displaying tool names, segment lengths, tool locations and setup notes
- Automatic Gage Allowance calculation
- CAD functions including part drawing capability and 3-D part views
- Optional Bend Simulation Software including: CAD file import, 3-D forming simulations, checks for part interference, automatic flat blank calculation

The addition of this new PC Control to your FMII is a cost-effective way of improving productivity in your forming operations resulting in lower cost per part. The basic control upgrade includes the following:

- Installation of the new Touchscreen PC Control using the existing pendant arm and enclosure by Cincinnati Incorporated Service Representatives
- A limited Planned Maintenance Service inspection on the FMII Press Brake
- Conversion of current part programs if machine has batch remote file transfer capability
- Control demonstration
- One-year parts and labor warranty



The Touchscreen PC Control delivers fast and repeatable setups through advanced control technology. Repeat jobs are recalled from a large-capacity hard drive, USB convenience outlet or network. Each program contains the visual-oriented JOB SETUP page that displays tool names, segment lengths, and tool locations. Detailed setup notes are stored to ensure important instructions are displayed each time the job is recalled.

OPTIONAL ADVANCED FEATURE PACKAGE:

- Bend Simulation Module software on control and offline
- Dynamic Thickness Compensation
- Tonnage Reversal Auto Calculation
- Tool Segment Auto Calculation
- Tool Suggestion
- E-mail notification
- Batch Mode
- Print program and setup information from control
- Part Orientation
- Convert Utility
- Spreadsheet Tab Entry

With the Advanced Feature Package, new programs are created through manual data entry, importing CAD files, or drawing the part in a cross section or flat view. After selecting the tools from the graphical tool library and accepting the bend simulation, a part program with optimized ram settings and backgauge positions is automatically created.

To request a quotation or to place an order, please call our Parts Department at 513-367-7413 or e-mail us at parts@e-ci.com.

CINCINNATI[®]
CINCINNATI INCORPORATED

Box 11111, Cincinnati, OH 45211
Phone: (513) 367-7100
FAX: (513) 367-7552
E-Mail: info@e-ci.com
Website: www.e-ci.com